

GFLZZ0224-10

HIGH PRECISION 0.2S MEDIUM VOLTAGE 11KV RESIN CAST INDOOR CURRENT TRANSFORMER

This model GFLZZ0224-10 dry type indoor current transformer is used in 12KV, 11KV, 10KV, 6KV and 3kV power system, for measuring and protection. It has been used in indoor pole mounted and transmission line. This product has the characteristics of high efficiency and large capacity, and can be customized according to customer requirements. This model current transformer with secondary 1A and 5A output.

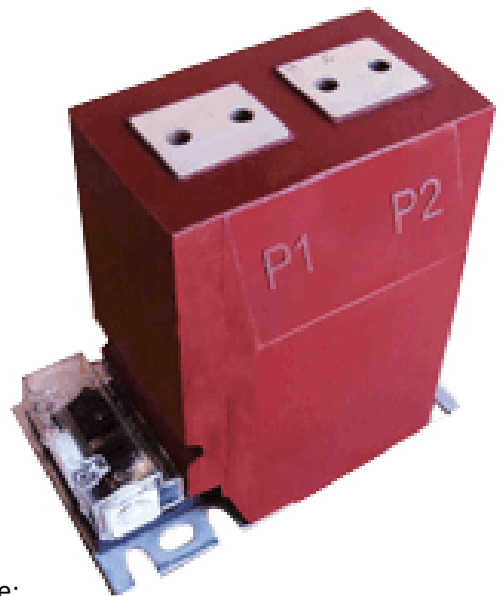
For insulation and protection, the assembly is cast in hydrophobic cycloaliphatic epoxy (HCEP) using automatic vacuum pressure. The HCEP material offers superior arc track, ozone, and ultraviolet-resistive properties while maintaining physical strength. Primary and secondary use pure electrolytic copper, both winding and core have high voltage shielding processing. The hydrophobic surface properties of HCEP ensure highly reliable performance in wet, humid, or polluted environments.

It can be used for less than 12KV distribution cabinet, coal mine, power plant, rail way, factories... .

All of our GFUVE current transformers are strictly comply IEC60044-1, IEC 61869-2, ANSI/IEEE C57.13, GB1208-2006, GB/T 20840.1-2010, GB/T 20840.2-2014, GB/T 22071.1-2018, IEC/EN61010-2-032, IEC/EN 61010-2-031.

Features

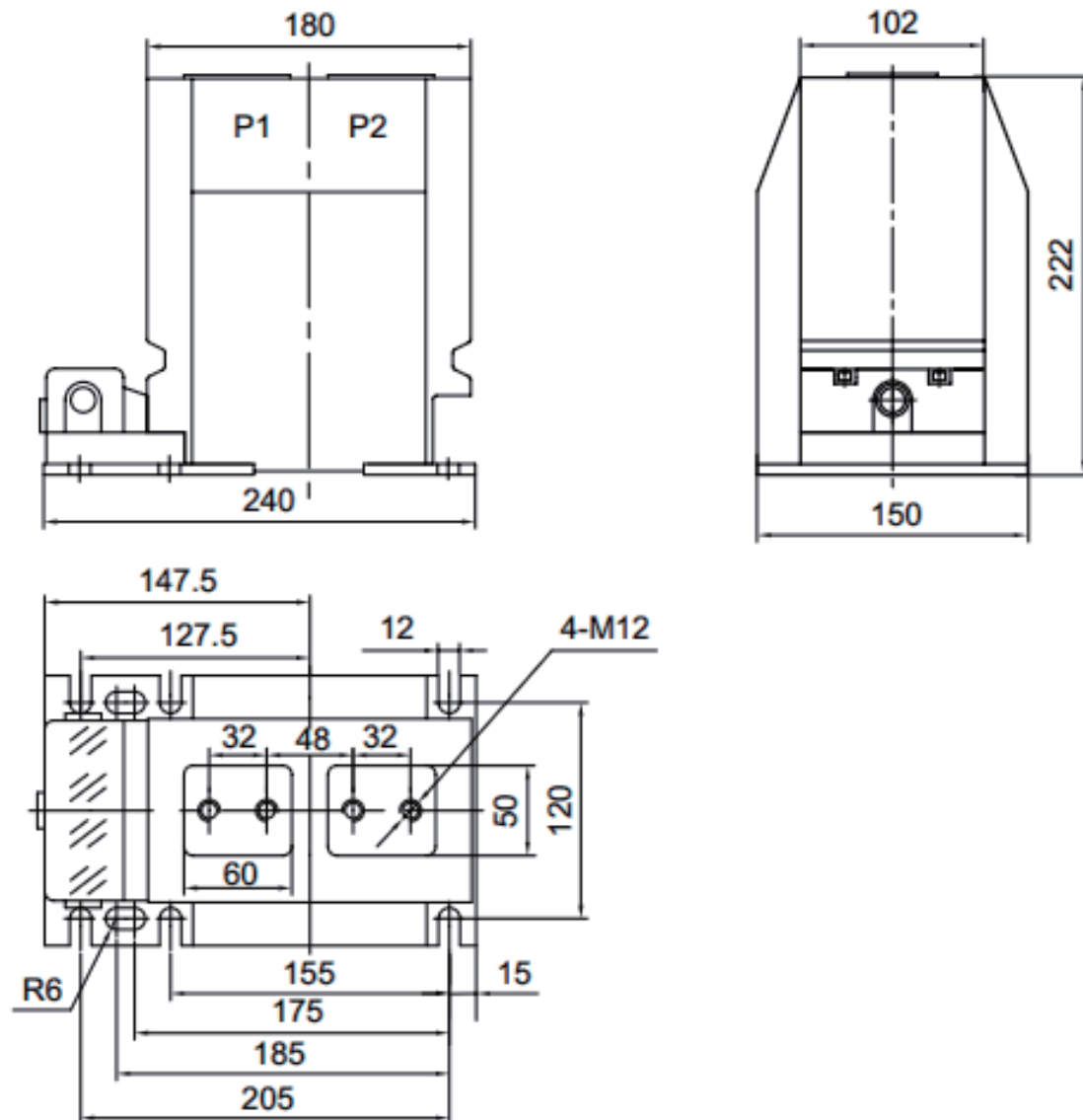
1. Weight: 20KG;
2. Material:Epoxy(HCEP) ;
3. Rated voltages up to 12 kV;
4. Using life: more than 30 years;
5. Secondary current output 5A or 1A;
6. 3KV 6KV 10KV 11KV 12KV indoor using;
7. Rated basic insulation levels (BIL) up to 75 kV;
8. Reasonable structure and robust construction;
9. Built-in surge protection for current transformers;
10. Standard & Special High Accuracy metering classes;
11. Accuracy class: 0.2S 0.2, 0.5S, 0.5, 1, 5P20, 5P10, 10P20;
12. Convenient installation, suitable for installation in any location;
13. High accuracy, extended range ratings for current transformers;
14. Dry-type design, environmentally Friendly & Minimum Maintenance;
15. IEC60044-1, IEC 61869-2, GB/T 20840.1,2 & ANSI/IEEE C57.13, NTC 2205 Standards;



Application

1. Rail way;
2. Coal Mine;
3. Power plant;
4. Energy meter;
5. Power Meter;
6. Power station;
7. Oil, gas company;
8. Air switch cabinet;
9. Distribution system;
10. Ring network cabinet;
11. Measuring instrument;
12. Electric Power Bureau;
13. Primary metering cabinets;
14. MV Power Quality Analyzer
15. Substation metering and relaying;
16. Industrial and mining enterprises;

Outline Drawing



Parameters

Technical parameters	
Standards	IEC60044-1; IEC 61869-2; NTC 2205; ANSI/IEEE C57.13; GB1208-2006; GB/T 20840.1-2010, GB/T 20840.1,2, GB/T 22071.1-2018
Accuracy Class	0.2S, 0.2, 0.5S, 0.5, 1 (IEC61869-2 standard) 5P20, 5P10, 10P10, 10P5
Rated primary current	10-2000A
Rated load	≤50VA
Rated frequency	50Hz or 60Hz
Rated secondary current	5A or 1A
Ratio	10/5A, 100/5A, 200/5A, 300/5A ...2000/5A or 1A
Rated short-time thermal current	63kA, 1S
Rated continuous thermal current	120%I _n
Rated dynamic current	200kA
Secondary winding power-frequency voltage	3kV, 1min
Rated insulation level	12/42/75KV
Instrument security factor	FS ≤10
Insulation Class	E
Rated Voltage level	3KV, 6KV, 10KV, 11KV, 12KV
Mechanical parameters	
Dimensions (W×D×H) (mm)	310x155x225
Material	Epoxy resin
Weight (kg)	22
Operating conditions	
Operating temperature	-25°C to +70°C
Daily average temp	<+40°C
Storage temperature	-40°C to +70°C
Environment	indoors
Altitude	<1000 meters
Condition	No existence of severely begrimed, erosive and radioactive gas in the air. Permission of long-term operation under rated current.

Technical Data

Rated Primary Current(A)	Class Combination	Accuracy class and Rated output(VA)		Short-time thermal current (kA/S)	Rated dynamic current (kA)
		0.2/0.5	10P15/5P20		
5-150	0.2(S)/0.2(S) 0.2(S)/10P15 0.5/10P15 0.2(S)/5P20 0.5/5P20	10	15	150 I _{1n}	375 I _{1n}
200				36	90
300				45	100
400-600				63	150
800-1000				100	250
1250-2000				140	350

Ordering Information

Be sure to the type, current ratio, accuracy class, rated load and use of the products when you plan to make a order. Special specifications could be customized. All kinds of different specifications and parameters current transformers can be made according to your needs.