

GFJDZ1053-10A

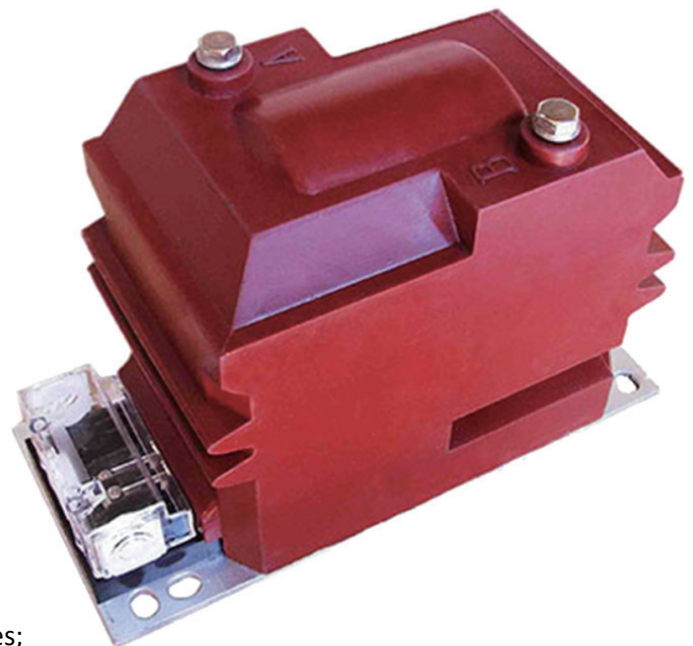
DOUBLE POLE 6KV 11KV 0.2 CLASS INDOOR VOLTAGE TRANSFORMER

GFJDZ1053-10A High Efficient Indoor voltage transformer is used for metering and relaying on 11kV circuits. This product has the characteristics of high precision and large capacity, and can be customized according to customer requirements. It is used by Air insulation cabinet, as protection voltage transformer and measurement voltage transformer in less than 11KV power system. It was designed with reasonable structure and robust construction. Its limiting thermal Output can reach 200(VA)It has excellent short circuit and thermal withstand capabilities.

All of our indoor voltage transformers are strictly comply IEC60044-2, IEC 61869-1,3, ANSI/IEEE C57.13, GB1207-2006, GB/T 20840.3-2013, GB/T 22071.2-2017, GB/T 20840.102-2020.

Features

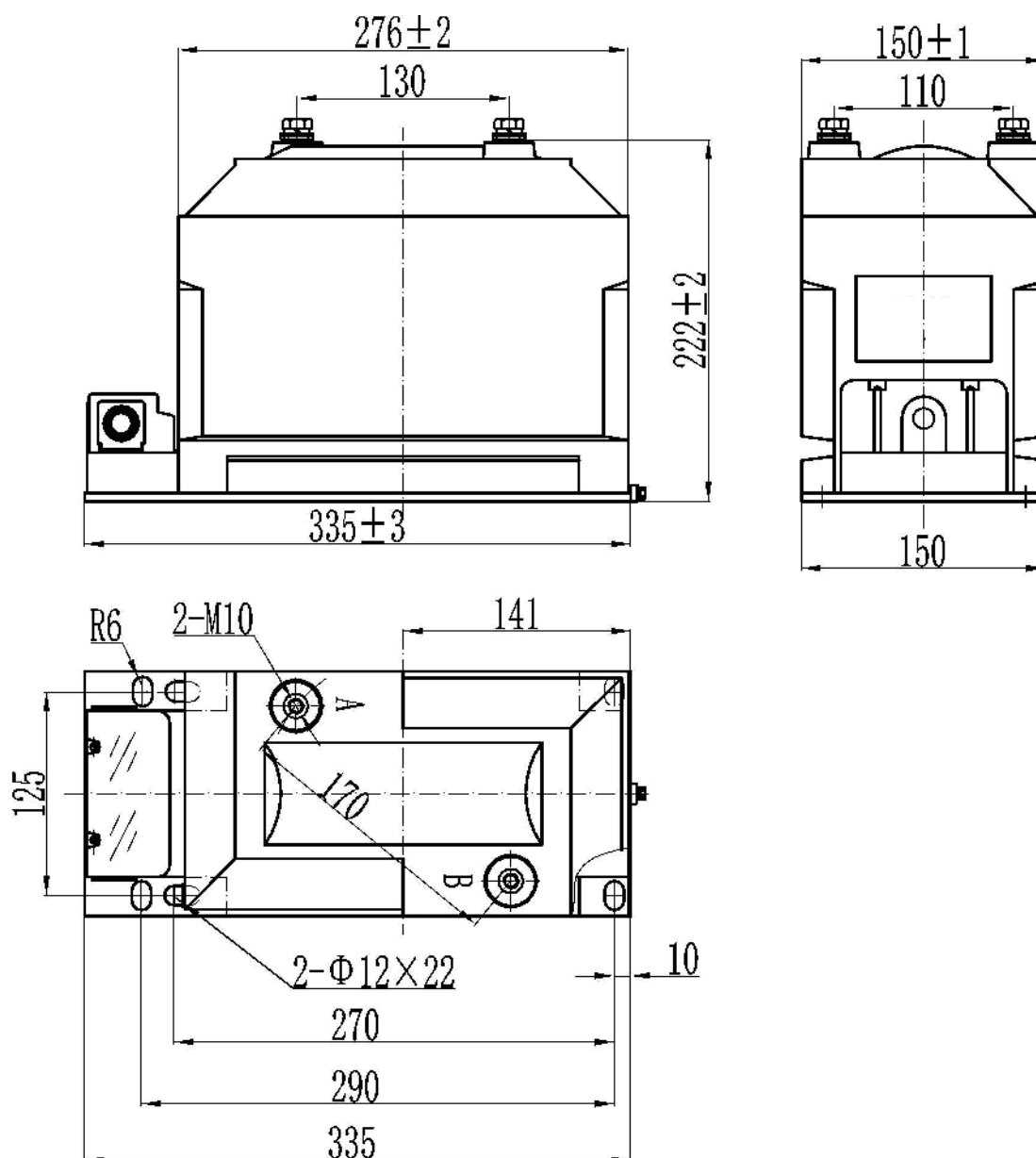
1. Weight:18.5KG;
2. Small size design;
3. Rated voltages up to 12 kV;
4. Limiting Thermal Output 200(VA);
5. Accuracy class: 0.2, 0.5, 1, 3, 3P, 6P;
6. Measuring and protection class using;
7. Rated voltage ratio (KV):10/0.1 6/0.1 3/0.1;
8. Reasonable structure and robust construction;
9. Hydrophobic Cycloaliphatic Epoxy Resin (HCEP);
10. Rated basic insulation levels (BIL) up to 75 kV;
11. Material: High quality silicon steel and Epoxy Resin;
12. IEC60044-2; IEC 61869-1,3; ANSI/IEEE C57.13 standard;
13. Excellent short circuit and thermal withstand capabilities;
14. Convenient installation, suitable for installation in any location;
15. The windings are copper wire with copper plate double isolation;
16. Partial Discharge measurements exceed the IEEE/IEC and CAN/CSA requirements;



Applications

- | | | |
|---------------------------|---------------------------|--------------------------------|
| 1. Rail way; | 2. Coal Mine; | 3. Power Plant; |
| 4. Energy meter; | 5. Power Meter; | 6. Power station; |
| 7. MV switchgears; | 8. Distribution system; | 9. Air insulation cabinet; |
| 10. Ring network cabinet; | 11. Measuring instrument; | 12. MV Power Quality Analyzer; |

Outline Drawing



Parameters

Technical parameters	
Standards	IEC60044-2; IEC 61869-1,3; ANSI/IEEE C57.13; GB1207-2006; GB/T 20840.1-2010, GB/T 20840.3-2013, GB/T 22071.2-2017, GB/T 20840.102-2020
Accuracy Class	0.2, 0.5, 1, 3, 3P, 6P
Rated Voltage	12KV, 11KV, 10KV, 6KV, 3KV
Rated load	≤150VA
Secondary voltage output	100V, 110V, 120V, 220V, 240V , 380V
Rated frequency	50/60Hz
Cosø	0.8 (lag)
Phase number	Single
Connection method	Delta
Rated insulation level	12/42/75KV, 7.2/32/60KV, 3.6/25/40KV
Insulation class	E
Class of pollution	II
Mechanical parameters	
Material	Epoxy resin
Dimensions (W×D×H) (mm)	335×150×222
Weight (kg)	18.5
Color	Red or customized
Working conditions	
Operating temperature	-40°C to +70°C
Storage temperature	-40°C to +70°C
Daily average temp	<+40°C
Environment	indoors
Altitude	<1000 meters
Conditions	No existence of severely begrimed, erosive and radioactive gas in the air. Continuous working under the rated voltage is allowed.

Selection Guide

Model	Rated Voltage Ratio(KV)	Accuracy class and Rated output (VA)						Limiting Thermal Output(VA)
		0.2	0.5	1	3	3P	6P	
GFJDZ1053-10A	12/0.12	15	30	60	150	50	50	200
GFJDZ1053-10A	11/0.11							
GFJDZ1053-10A	10/0.1							
GFJDZ1053-6A	6/0.1							
GFJDZ1053-3A	3/0.1							